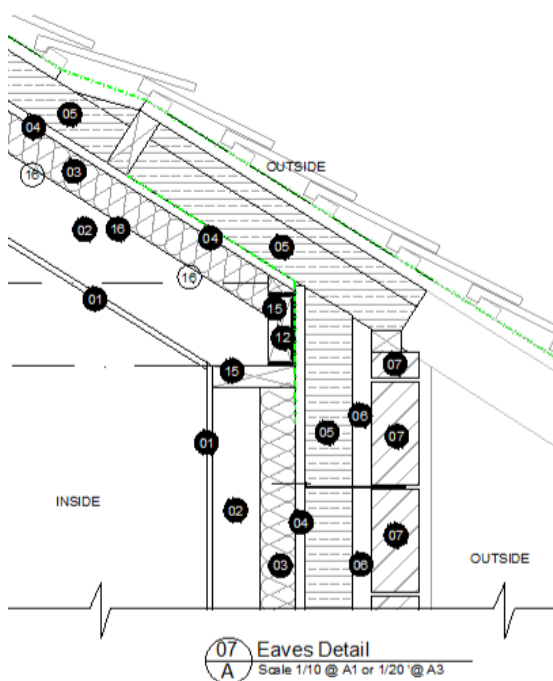


**Earth Cycle Technologies**

## **Construction Detailing Inception Booklet**

**For Construction Details in Highly Efficient Buildings**



## Construction Details

This guide deals specifically with construction details alone and is tailored to designers who simply want just that element. With all construction details in the modern world these days this also means you will need the construction details calculated for surface condensation and thermal analysis of its performance.

If you cannot calculate this you must have it calculated and details on the additional Moisture and Thermal Bridging please read [here](#)

## Fee's for Construction Details & Thermal Bridging

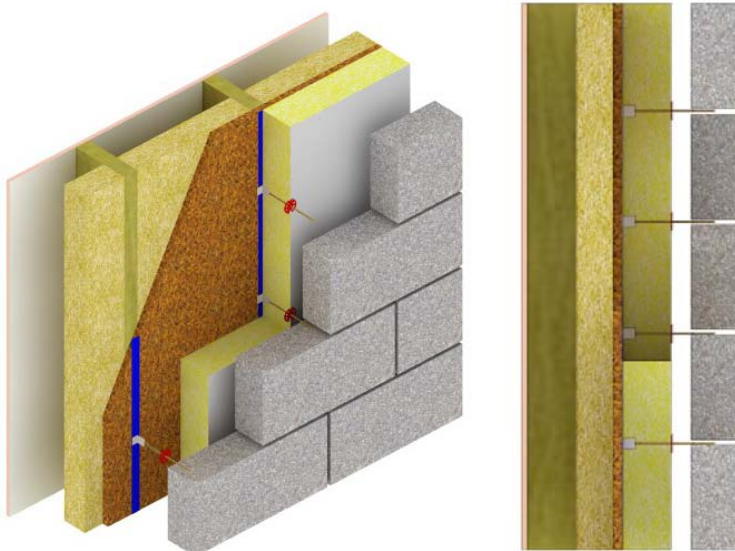
All construction details are priced at €295 per detail.

Thermal bridging however is based on complexity of calculation. You can obtain the thermal bridging outline fee's [here](#)

However, if you would like to enquire it may be best to email the building plans, elevations and sections to [info@earthcycle.co](mailto:info@earthcycle.co) and we will get back to you with a quotation.

## 3D Detail Display Models

Also if you would like for presentation purposes, we can create 3dimensional and animated details. 3D still's are priced at €295 per detail and animated details from €450. For more details please enquire [info@earthcycle.co](mailto:info@earthcycle.co)





Many thanks for your custom.

**Earth Cycle Technologies**

## **Contact Us**

Email: [info@earthcycle.co](mailto:info@earthcycle.co)

Phone;

00 353 85 147 5880

Post;

5 Pebble Bay  
Wicklow Town  
Co. Wicklow  
Ireland