



**Earth Cycle Technologies**

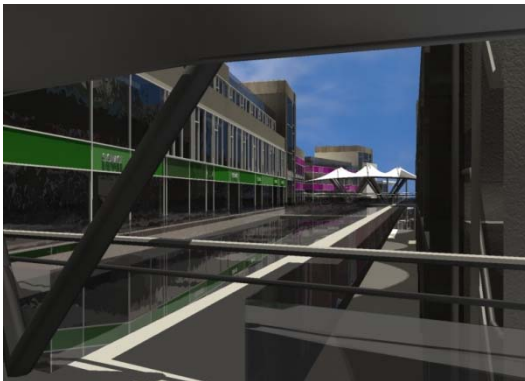
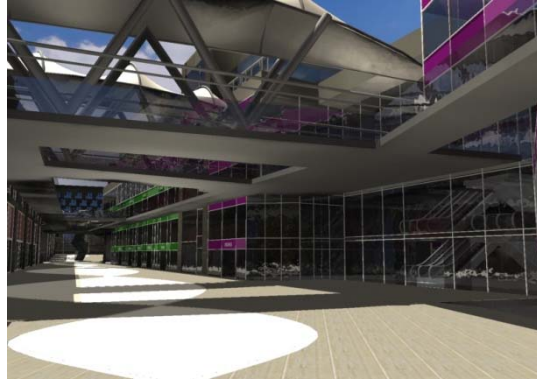
## **Photomontage, Interior and Exterior Visualisation Inception Booklet**

**For Visualization of Buildings within Photographic Context**



## Previous Images

Photomontages are a great way to communicate a design concept with planners, locals and design professionals. Here at Earth Cycle we have reasonable rates, fast turnaround times and as you can see below excellent results!



## Interior



Original



RGB A



RGB B



RGB C

## Schematics & Night Shots:





## Fee's for Photomontages and Visualizations

Photomontages and Visualizations start at €295 per viewpoint of single residential buildings. For commercial or large scale buildings please email [info@earthcycle.co](mailto:info@earthcycle.co) for a quotation.

Live sessions can also be held for interior design, architectural design, paint selections and much much more. For info on live sessions please click [here](#)

Visualizations can also be rendered in sketchy, diagrammatic and basic formats should they be desired.





Many thanks for your custom.

**Earth Cycle Technologies**

## **Contact Us**

Email: [info@earthcycle.co](mailto:info@earthcycle.co)

Phone;

00 353 85 147 5880

Post;

5 Pebble Bay  
Wicklow Town  
Co. Wicklow  
Ireland